

UNI-T®



UTi32

高温型红外热成像仪使用说明书
Thermal Imager User Manual

P/N:110401110944X

UTi32
高温型红外热成像仪使用说明书
(3p-20p)

UTi32
Thermal Imager User Manual
(22p-38p)

序言

尊敬的用户：

您好！感谢您选购全新的UTi32高温型红外热成像仪，为了正确使用本产品，请您在使用之前仔细阅读本说明书全文，特别是有关“安全须知”的部分。

如果您已经阅读完本说明书全文，建议您将此说明书妥善保管，与热成像仪一同放置或者放在您随时可以查阅的地方，以便在将来的使用过程中查阅。

有限担保和有限责任

公司担保本产品自购买之日起一年内，在材料和工艺上均无任何缺陷。本担保不适用于由于意外、疏忽、误用、改装、污染及非正常操作或处理引起的损坏。经销商无权以公司的名义给予其它任何担保。如在保修期内需要维修服务，请与您就近的授权服务中心联系，获得产品退还授权信息；然后将产品寄至该服务中心，并附上产品问题描述。

本项担保是您能获得的最佳补偿。除此以外，公司不提供任何明示或隐含的担保，例如适用于某一特殊目的的隐含担保。同时，公司不对基于任何原因或推测而导致的任何特殊、间接、附带或继起的损坏或损失负责，由于某些州或国家不允许对默认担保及附带或继起的损坏加以限制，故上述的责任限制与规定或许对您不适用。

目录

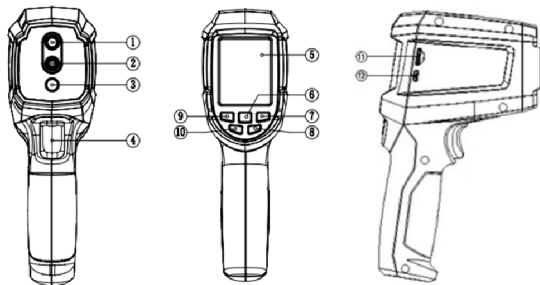
1.性能指标	5
2.构造	7
3.显示说明	8
4.开关机	9
5.菜单说明	9
6.拍照及存储	10
7.照明灯开关	11
8.可见光融合	11
9.中心点与高低温追踪	11
10.调色板	12
11.高低温报警	12
12.图片浏览	13
13.设定页面	14
14.语言	15
15.日期及时间	15
16.温度单位	16
17.高低温设定	16
18.发射率	17
19.常用发射率	17
20.显示屏亮度	18
21.自动关机	18
22.本机信息	19
23.恢复设置	19
24.格式化SD	20
25.保养	20
26.安全须知	20

1. 性能指标

屏幕规格	2.4" LCD
红外分辨率	32*32像素
视场角	30°*30°
热灵敏度 (NETD)	0.15°C
帧频	9Hz
调焦模式	免调焦
温度测量范围	-20°C ~ 1000°C
测量精度	±2% or ±2°C (取大值, 常温25°C)
测温功能	中心点/最高温/最低温
测温单位	摄氏度、华氏度
测温分辨率	0.1°C
发射率设置	0.01 ~ 1.00可调
拍照	有
可见光	有

可见光拍摄及双光融合	热成像、融合、可见光
色板	3
高低温追踪	有
LED照明	有
电池	3.7V Li-ion Battery(18650)
电池使用时间	约7小时
电源管理	关闭、5分钟、10分钟、30分钟
储存类型	Mirco SD卡
USB插口	Micro USB
运输环境、存贮环境	-20°C ~ 60°C (-4°F~140°F) <85%RH (非冷凝)
工作温度	0°C ~ 50°C (32°F ~ 122°F)
工作湿度	10% ~ 95%RH(非冷凝)
尺寸	205 x 124 x 65
配件	USB线、SD卡、说明书

2. 构造

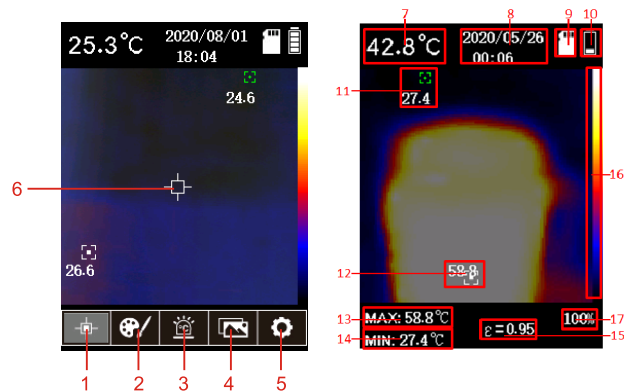


项目	说明
1	红外摄像头
2	可见光摄像头
3	LED照明灯
4	扳机（拍照）
5	液晶显示屏
6	OK键
7	右键
8	返回键（LED灯）
9	左键
10	开机键
11	SD卡槽
12	USB 接口

3. 显示说明

屏幕尺寸：2.4" (495mm x 377mm)

显示器分辨率：320 (垂直) x 240 (水平)

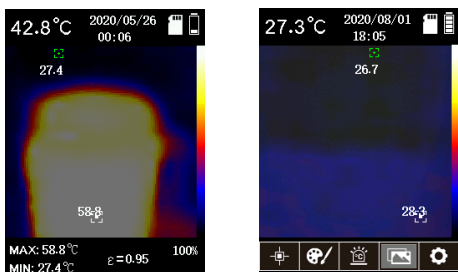


项目	说明	项目	说明
1	光标选项	10	电池电量图标
2	调色板选项	11	自动追踪温度最小点
3	H/L报警开关选项	12	自动追踪温度最大点
4	图片浏览选项	13	当前最高点温度值
5	设置选项	14	当前最低点温度值
6	测温中心点	15	当前发射率图标
7	测温中心点温度值	16	当前色板
8	日期及时间	17	融合程度百分比显示
9	SD 卡状态图标		

4. 开关机

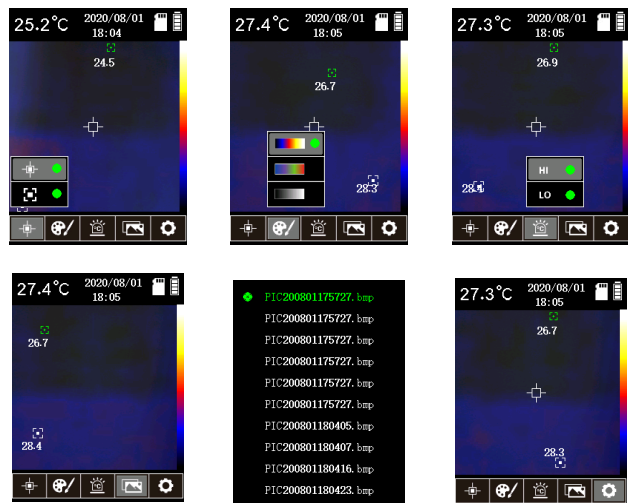
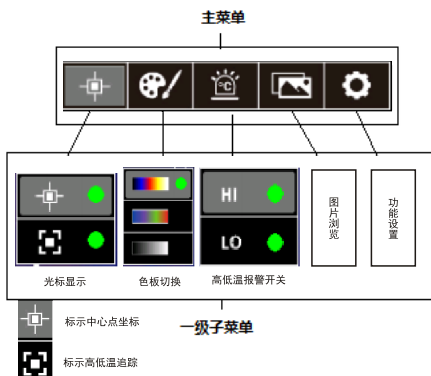
长按开机键，热像仪开机；需要关机时，长按开机键，热像仪关机。

5. 菜单说明

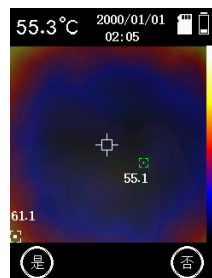


1. 按OK键/菜单键弹出主菜单。
2. 按左右键选择子菜单。
3. 按OK/菜单键确定进入主菜单的子菜单。
4. 按左右键选择子菜单中的选项。
5. 两次按返回键退出菜单并返回热像显示界面。

主菜单和子菜单




6. 拍照及存储

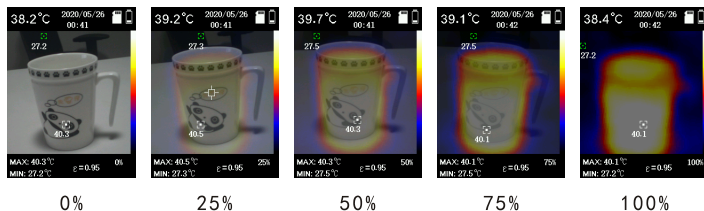


扣动扳机拍照键进行拍照，此时图像冻结，弹出是否保存子菜单选项如图所示，可通过左右键对选项进行选择，按下左键即选择是保存图片，按下右键即选择否不保存图片。

7. 照明灯开关

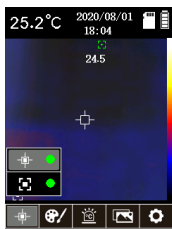
长按返回键 ，led 照明灯开启，再次长按返回键 led 照明灯关闭。


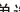

8. 可见光融合



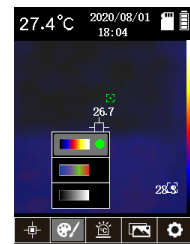
在热成像界面，通过左右方向键  或 ，切换可见光模式。可见光的融合步率为25%。对应步率为：0% > 25% > 50% > 75% > 100%，按左右方向键循环对可见光融合度进行调节。


9. 中心点与高低温追踪



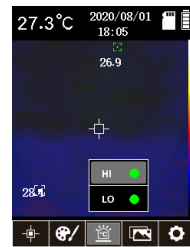
若需要使用中心点/高低温追踪功能，按OK键弹出主菜单选项，通过左键/右键选中光标选项 ，再按OK键进入光标子菜单选项，通过左键/右键进行选择；按OK键选中  (Center) 选项，当出现绿色圆点时表示打开了中心点光标，当绿色圆点消失表示关闭了中心点光标功能；按OK键选中  (High/Low) 选项，当出现绿色圆点时表示打开了高低温追踪功能，当绿色圆点消失表示关闭了高低温追踪功能，最后点击返回键退出光标子菜单返回到一级主菜单，再次点击返回键退出一级主菜单回到图像显示模式。在显示模式下在屏幕的左下方的区域，显示最高点和最低点的温度。




10. 调色板

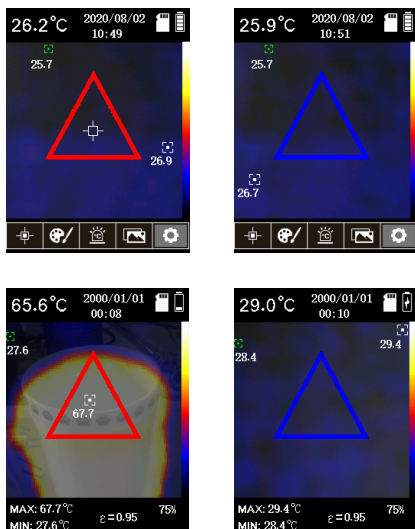


调色板菜单提供了铁红、彩虹和灰白三种色彩，用于调节捕获的红外图像伪色。若需使用调色板功能，按OK键弹出主菜单选项，通过左键/右键选中色板选项 ，再按OK键进入色板子菜单选项，通过左键/右键在铁红、彩虹和灰白三种色彩中进行选择，按OK键确认选项，最后点击返回键退出色板子菜单返回到一级主菜单，再次点击返回键退出一级主菜单回到图像显示模式。

11. 高低温报警

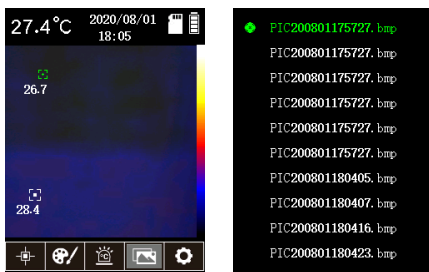


若需要使用高低温报警功能，按OK键弹出主菜单选项，通过左键/右键选中高低温报警选项 ，再按OK键进入高低温报警子菜单选项，通过左键/右键进行选择；按OK键选中  (高温报警) 选项，当出现绿色圆点时表示打开了高温报警功能，当绿色圆点消失表示关闭了高温报警功能；按OK键选中  (低温报警) 选项，当出现绿色圆点时表示打开了低温报警功能，当绿色圆点消失表示关闭了低温报警功能，最后点击返回键退出高低温报警子菜单返回到一级主菜单，再次点击返回键退出一级主菜单回到图像显示模式。



当高温报警功能开启时，当所测当前温度超过高温设定的温度值时，就会出现红色三角形的提示画面，如上图所示。当所测当前温度低于低温设定的温度值时，就会出现蓝色三角形的提示画面，如上图所示。

12. 图片浏览



主菜单中选中 图片浏览选项，点击OK键，弹出图片浏览界面一级子菜单，按左右键选择切换需要查看的照片名称，点击OK键弹出图片浏览界面二级子菜单，浏览当前名称的图片。点击返回键进入上级菜单，图片名称浏览界面，再按返回键返回主菜单。



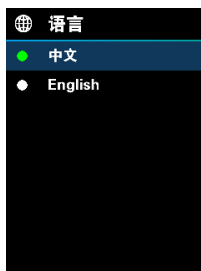
在图片浏览二级子菜单时，点击OK键，弹出是否删除当前图片提示界面，如上图所示，通过点击左键删除当前图片，右键不删除当前图片。点击返回键，返回到图片浏览页面一级子菜单。再次点击返回键进入热像界面。

13. 设置页面



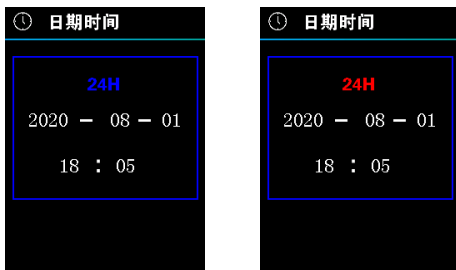
主菜单中选中 ，点击OK键，弹出设置页面一级菜单，如上图所示，通过左右键选择菜单选项，再次点击OK键进入设定页面二级菜单，点击返回键返回到设置页面一级菜单，再次点击返回键则返回到主菜单。

14. 语言



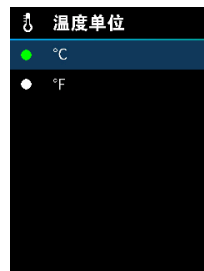
进入设置页面一级菜单后，选中语言选项，点击OK键，进入“语言”子菜单，如上图所示，通过左右键选择语言种类，点击OK键选中所需语言选项，然后点击返回键退出“语言”子菜单，返回到设置页面一级菜单。

15. 日期时间



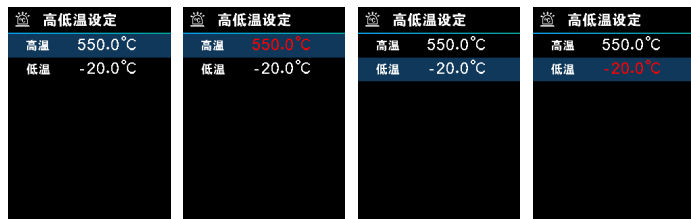
进入设置页面一级菜单后，选中日期时间选项，点击OK键，进入“日期时间”子菜单，如上图所示，按左右键选择需要调节的时间参数，再点击OK键，参数颜色由蓝色变成红色，进入参数调节状态，按左右键加减数值，设置完之后再点击OK键保存，颜色变回蓝色，最后按返回键退回到设置页面的一级菜单。

16. 温度单位



进入设置页面一级菜单后，选中温度单位选项，点击OK键，进入“温度单位”子菜单，如上图所示，通过左右键选择温度单位摄氏度（°C）和华氏度（°F），选中后点击OK键选中所需选项，然后点击返回键退出“温度单位”子菜单，返回到设置页面一级菜单。

17. 高低温设定



进入设置页面一级菜单后，选中高低温设定选项，点击OK键，进入“高低温设定”子菜单，如上图所示，通过左右键选择选项，当选中“高温/低温”选项时，点击OK键，通过左右键调节温度参数，设置完成之后按OK键保存参数，高低温报警功能可通过主菜单的HI/LO打开或关闭，然后点击返回键退出“高低温设定”子菜单，返回到设置页面的一级菜单。

18. 发射率

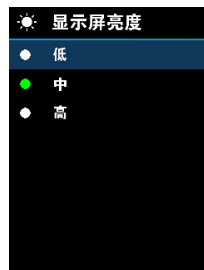


选择正确的发射率数值对您进行精确温度测量很重要，发射率对产品测得的表面温度有重大影响。进入设置页面一级菜单后，选中发射率选项，点击OK键，进入“发射率”子菜单，如上图所示，再次点击OK键，所选择的发射率数值变成红色，通过左右键可调节发射率参数，调节完成后点击OK键保存参数，最后点击返回键退出“发射率”子菜单，回到设置页面一级菜单。发射率1.01~1.00可调，默认值设为0.95。

19. 常用发射率

材质	发射率	材质	发射率
木	0.85	黑纸	0.86
水	0.96	聚碳酸	0.8
砖	0.75	混凝土	0.97
不锈钢	0.14	氧化铜	0.78
胶带	0.96	铸铁	0.81
铝板	0.09	锈	0.8
铜板	0.06	石膏	0.75
黑铝	0.95	油漆	0.9
人体皮肤	0.98	橡胶	0.95
沥青	0.96	土壤	0.93
PVC塑料	0.93		

20. 显示屏亮度



进入设置页面一级菜单后，选中显示屏亮度选项，点击OK键，进入“显示屏亮度”子菜单，如上图所示，通过左右键选择亮度参数，有“低/中/高”三种亮度可选，选中后点击OK键选中所需选项，然后点击返回键退出“显示屏亮度”子菜单，返回到设置页面一级菜单。

21. 自动关机



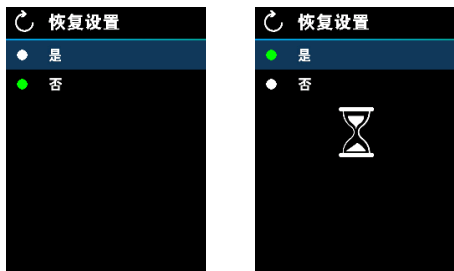
进入设置页面一级菜单后，选中自动关机选项，点击OK键，进入“自动关机”子菜单，如上图所示，通过左右键选择时间参数，有“5分钟/10分钟/30分钟/关闭”可选，选中后点击OK键选中所需时间参数选项，然后点击返回键退出“自动关机”子菜单，返回到设置页面一级菜单。

22. 本机信息



进入设置页面一级菜单后，选中本机信息选项，点击OK键，进入“本机信息”子菜单，如上图所示，然后点击返回键退出“本机信息”子菜单，返回到设置页面一级菜单。

23. 恢复设置



进入设置页面一级菜单后，选中恢复设置选项，点击OK键，进入“恢复设置”子菜单，如上图所示，通过左右键选择选项，点击OK键选中所需选项，如果选中“是”按下OK键，画面会出现沙漏图标，图标消失代表恢复设置完成，然后点击返回键退出“恢复设置”子菜单，返回到设置页面一级菜单。

24. 格式化SD



进入设置页面一级菜单后，选中格式化SD选项，点击OK键，进入“格式化SD”子菜单，如上图所示，通过左右键选择选项，点击OK键选中所需选项，如果选中“是”按下OK键，画面会出现沙漏图标，图标消失代表SD卡已经格式化（时间比较长），然后点击返回键退出“格式化SD”子菜单，返回到设置页面一级菜单。

25. 保养

用湿布或弱肥皂液清洗结构外壳，不要使用研磨剂、异丙醇或溶剂清洁仪器外壳镜头/窗口。

26. 安全须知

为了保证测量结果准确，请仔细阅读使用说明。请务必按照说明书使用本产品，否则造成产品损坏后将不进行免费保修。请不要在易燃易爆、蒸汽周围、潮湿或腐蚀性环境下使用本仪器。请不要在仪器损坏、摔落或修正后的情况下继续使用，以免造成错误的测试结果。请参考辐射系数信息获取实际温度，否则会导致测得的温度不准确。由于充电会引起机体内部温度升高，从而影响温度测量精度。因此，建议在对本产品充电时不要进行温度测量。

优利德®

优利德科技(中国)股份有限公司

地址：广东省东莞市松山湖园区工业北一路6号

电话：(86-769) 8572 3888

邮编：523 808

http://www.uni-trend.com.cn



PREFACE

Thank you for purchasing the new UTi32 thermal imager. In order to use this product safely and correctly, please read this manual thoroughly, especially the Safety Instructions part.

After reading this manual, it is recommended to keep the manual at an easily accessible place, preferably close to the device, for future reference.

LIMITED WARRANTY AND LIABILITY

Uni-Trend guarantees that the product is free from any defect in material and workmanship within one year from the purchase date. This warranty does not apply to damages caused by accident, negligence, misuse, modification, contamination and improper handling. The dealer shall not be entitled to give any other warranty on behalf of Uni-Trend. If you need warranty service within the warranty period, please contact your seller directly.

This warranty is the only compensation you can obtain. Uni-Trend will not be responsible for any special, indirect, incidental or subsequent damage or loss caused by any reason or speculation. As some areas or countries do not allow limitations on implied warranties and incidental or subsequent damage, the above limitation of liability and stipulation may not apply to you.

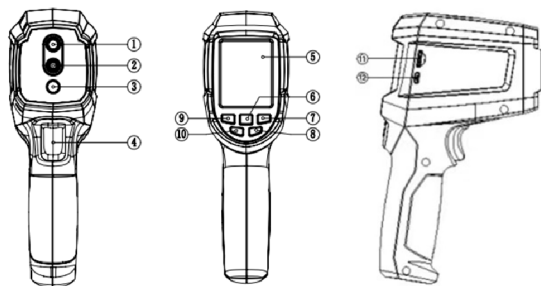
Table of Contents

1. Technical Specifications	24
2. Product Structure	25
3. LCD Indicators/Icons	26
4. Power on/off	27
5. Menus	27
6. Image Capture and Storage	28
7. Flashlight	29
8. Visible Light Fusion	29
9. Center Point and High/Low Temperature Tracking	29
10. Palette	30
11. HI/LO Alarm	30
12. Image Viewing	31
13. Settings	32
14. Language	33
15. Date and Time	33
16. Temperature Unit	34
17. HI/LO Alert	34
18. Emissivity	35
19. Common Emissivity	35
20. Display Brightness	36
21. Auto Power Off	36
22. Device Information	37
23. Factory Reset	37
24. Format SD Card	38
25. Maintenance	38
26. Safety Instructions	38

1. Technical Specifications

Display	2.4" LCD
IR resolution	32*32 pixels
Field of view	30°*30°
NETD	0.15℃
Frame rate	9Hz
Focus mode	Focus free
Measurement range	-20℃~1000℃
Accuracy	±2% or ±2℃ (Whichever is greater,25℃)
Temperature display	Center point temperature, high/low temperature tracking
Units	℃/℉
Measurement resolution	0.1℃
Emissivity	0.01~1.00 adjustable
Image capture	√
Visible light	√
Image modes	Thermal, visible, fusion
Palettes	3
High/low temperature tracking	√
LED flashlight	√
Battery	3.7V Li-ion (18650)
Battery life	7h
Power	power off/5/10/30min
Storage type	Mirco SD card
USB interface	Micro USB
Transport/storage environment	-20℃~60℃ (-4℉~140℉) <85%RH (non-condensing)
Operating temperature	0℃~50℃ (32℉~122℉)
Operating humidity	10%~95% RH (non-condensing)
Product size	205×124×65
Accessories	USB cable, SD card, user manual

2. Product Structure

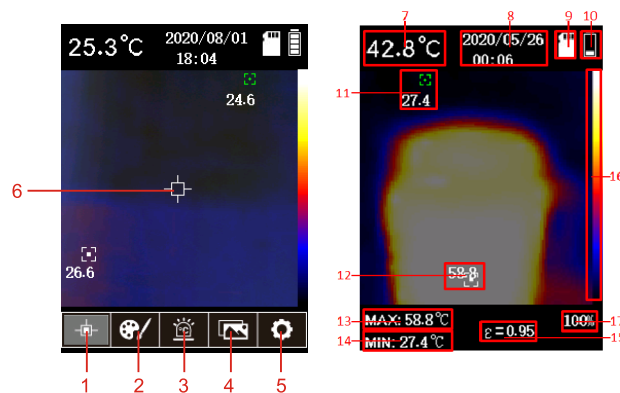


NO.	Description
1	Infrared camera lens
2	Visual light camera lens
3	LED flashlight
4	Trigger (image capture)
5	LCD
6	OK
7	Right
8	Return (LED flashlight)
9	Left
10	Power
11	SD card slot
12	USB interface

3. LCD Indicators/Icons

Display size: 2.4" (495mm×377mm)

Display resolution: 320 (vertical) × 240 (horizontal)

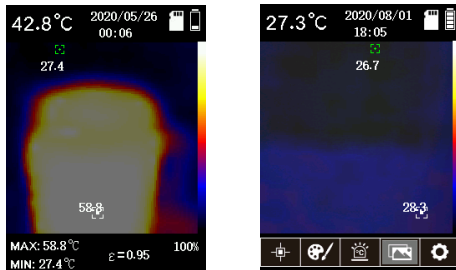


NO.	Description	NO.	Description
1	Cursor	10	Battery status
2	Palette	11	Lowest temperature spot
3	HI/LO alarm	12	Highest temperature spot
4	Image viewing	13	Current highest temperature
5	Settings	14	Current lowest temperature
6	Center point	15	Current emissivity
7	Center point temperature	16	Current palette
8	Date and time	17	Fusion rate
9	SD card		

4. Power on/off

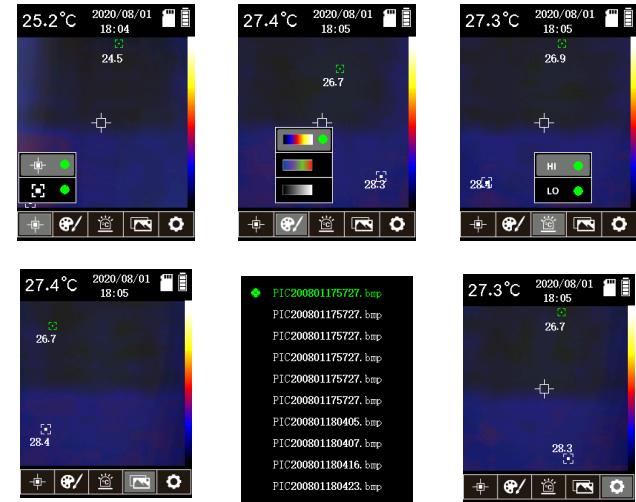
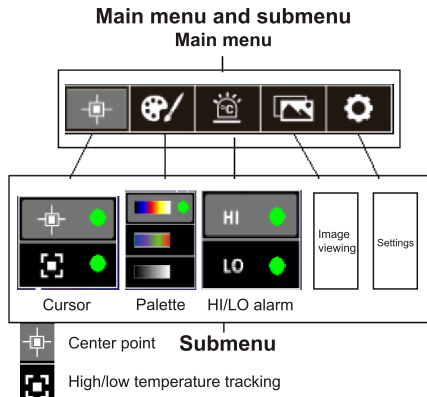
Long press the power button to turn on/off the thermal imager.

5. Menus

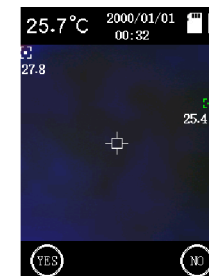


In the main interface:

1. Press the OK button to open the main menu.
2. Press the Left/Right button to step through submenus.
3. Press the OK button to open the selected submenu.
4. Press the Left/Right button to step through the options in the submenu.
5. Press the Return button twice to exit the menu and return to the main interface.



6. Image Capture and Storage

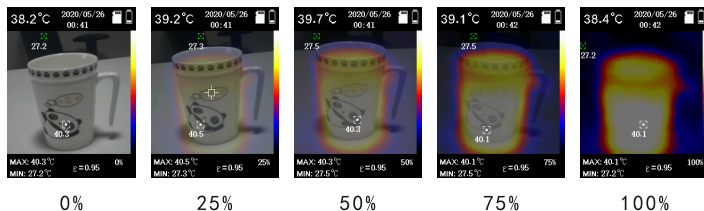




Press the trigger to capture an image. The interface will be frozen, and two options will show at the bottom of the screen. Press the Left button to select "YES" and save the captured image. Press the Right button to select "NO" and not save the image.

7. Flashlight

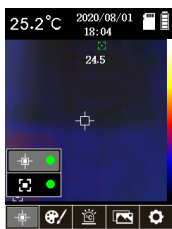
Long press the Return button  to turn on/off the flashlight.




8. Visible Light Fusion



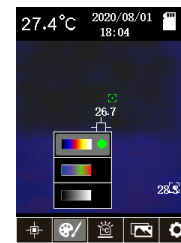
In the main interface, press the Left or Right button ( or ) to switch the image modes. The fusion rate will step through 0%>25%>50%>75%>100%.

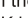
9. Center Point and High/Low Temperature Tracking



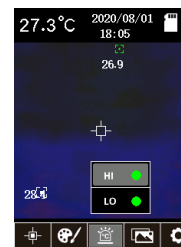
Press the OK button to open the main menu. Press the Left/Right button to select the Cursor , and press the OK button to enter its submenu. Press the Left/Right button to step through the options in the submenu, and press the OK button to select  (Center). When a green dot appears after the option, it means that the center point cursor function is turned on. When the dot disappears, the function is turned off. Select the  (High/Low) option, and press the OK button. When a green dot appears after the option, it means that the high/low temperature tracking function is turned on. Press the Return button to return to the main menu, and press it again to return to the main interface. The highest and lowest temperatures will be displayed at the bottom left of the main interface.




10. Palette

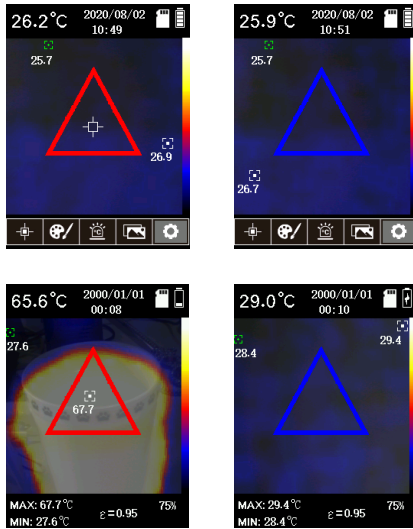


Press the OK button to open the main menu. Press the Left/Right button to select the Palette , and press the OK button to enter its submenu. Press the Left/Right button to step through three optional palettes: Iron red/Rainbow/Gray, and press the OK button to confirm. Press the Return button to return to the main menu, and press it again to return to the main interface.

11. HI/LO Alarm

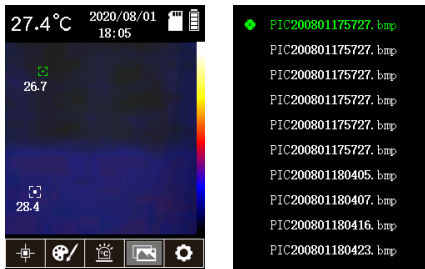



Press the OK button to open the main menu. Press the Left/Right button to select the HI/LO Alarm , and press the OK button to enter its submenu. Press the Left/Right button to step through the options in the submenu, and press the OK button to select  (HI alarm). When a green dot appears after the option, it means that the HI alarm function is turned on. When the dot disappears, the function is turned off. Select the  (LO alarm) option, and press the OK button. When a green dot appears after the option, it means that the LO alarm function is turned on. Press the Return button to return to the main menu, and press it again to return to the main interface.



When the HI alarm function is turned on and the measured temperature exceeds the HI value, a red triangle will pop up. When the LO alarm function is turned on and the measured temperature is lower than the LO value, a blue triangle will pop up.

12. Image Viewing

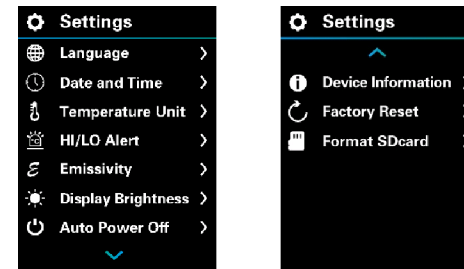



In the main menu, select the Image Viewing option , and press the OK button to open its submenu. Press the Left/Right button to step through all the images. Press the OK button to view the selected image. Press the Return button to return to the previous menu, and press it again to return to the main menu.



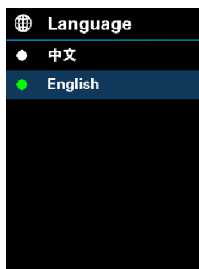
When viewing an image, press the OK button, and a box "Delete picture?" will pop up. Press the Left button to select "Yes", and press the Right button to select "No". Press the Return button to return to the main menu, and press it again to return to the main interface.

13. Settings



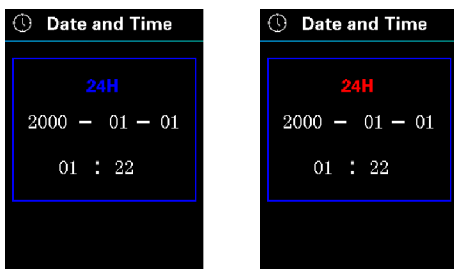
In the main menu, select Settings , and press the OK button to open its submenu. Press the Left/Right button to step through all the options. Press the OK button to enter the interface of the selected option. Press the Return button to return to the previous menu, and press it again to return to the main menu.

14. Language



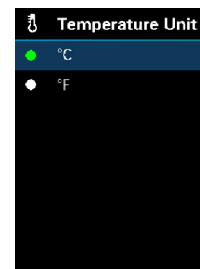
In the Settings interface, select Language, and press the OK button to enter the language setting interface. Press the Left/Right button to step through English/Chinese, and press the OK button to select a language. Press the Return button to return to the Settings interface.

15. Date and Time



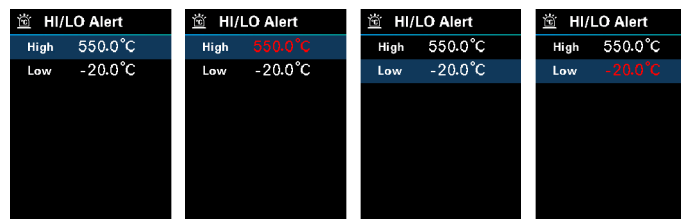
In the Settings interface, select Date and Time, and press the OK button to enter its setting interface. Press the Left/Right button to select the parameter to be adjusted. The selected parameter will change from white to blue. And then press the OK button. The parameter will change from blue to red and can be adjusted at this point. Press the Left/Right button to add or subtract the value of this parameter. Press the OK button to save the adjusted value, and the parameter color will return to blue. Press the Return button to return to the Settings interface.

16. Temperature Unit



In the Settings interface, select Temperature Unit, and press the OK button to enter the unit setting interface. Press the Left/Right button to step through °C/°F, and press the OK button to select a unit. Press the Return button to return to the Settings interface.

17. HI/LO Alert



In the Settings interface, select HI/LO Alert, and press the OK button to enter its setting interface. Press the Left/Right button to step through High/Low. When selecting High or Low, users can press the OK button to adjust the temperature. At this time, the value will turn red. Then press the Left/Right button to add/subtract the value, and press the OK button to confirm. Press the Return button to return to the Settings interface.

18. Emissivity

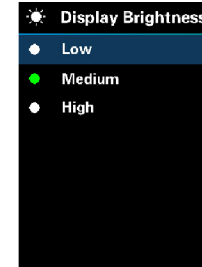


In the Settings interface, select Emissivity, and press the OK button to enter the emissivity setting interface. Press the OK button again, and the value will turn red. Press the Left/Right button to adjust the emissivity, and press the OK button to save. Press the Return button to return to the Settings interface. The range of the emissivity is 1.01~ 1.00 and the default value is 0.95.

19. Common Emissivity

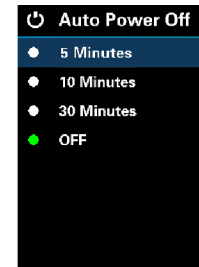
Material	Emissivity	Material	Emissivity
Wood	0.85	Black paper	0.86
Water	0.96	Polycarbonate	0.8
Brick	0.75	Concrete	0.97
Stainless steel	0.14	Copper oxide	0.78
Tape	0.96	Cast iron	0.81
Aluminum plate	0.09	Rust	0.8
Copper plate	0.06	Gypsum	0.75
Black aluminum	0.95	Paint	0.9
Human skin	0.98	Rubber	0.95
Asphalt	0.96	Soil	0.93
PVC	0.93		

20. Display Brightness



In the Settings interface, select Display Brightness, and press the OK button to enter the brightness setting interface. Press the Left/Right button to step through Low/Medium/High, and press the OK button to confirm. Press the Return button to return to the Settings interface.

21. Auto Power Off



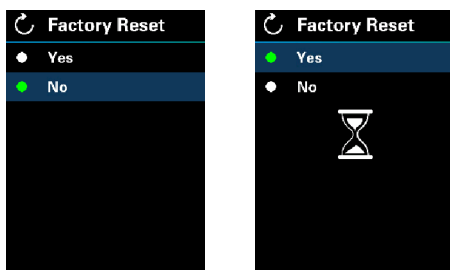
In the Settings interface, select Auto Power Off, and press the OK button to enter its setting interface. Press the Left/Right button to step through 5 Minutes/10 Minutes/30 Minutes/OFF, and press the OK button to confirm. Press the Return button to return to the Settings interface.

22. Device Information



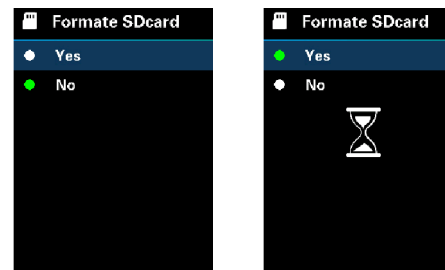
In the Settings interface, select Device Information, and press the OK button to enter its setting interface. Press the Return button to return to the Settings interface.

23. Factory Reset



In the Settings interface, select Factory Reset, and press the OK button to enter its setting interface. Press the Left/Right button to step through Yes/No, and press the OK button to confirm. When selecting "Yes", a sand clock icon will show on the screen. The factory reset operation is complete when the icon disappears. Press the Return button to return to the Settings interface.

24. Format SD Card



In the Settings interface, select Format SD Card, and press the OK button to enter its setting interface. Press the Left/Right button to step through Yes/No, and press the OK button to confirm. When selecting "Yes", a sand clock icon will show on the screen. The icon will disappear after SD formatting (it takes a long time). Press the Return button to return to the Settings interface.

25. Maintenance

Use a wet cloth or weak soap solution to clean the outer shell of the device. Do not use abrasives, isopropyl alcohol or solvents to clean the outer shell, lens or window.

26. Safety Instructions

In order to ensure the accuracy, please read the instructions carefully. Please use this product in accordance with the manual; otherwise the free warranty will not be carried out if the product is damaged. Please do not use this device in flammable, explosive, steamy, humid or corrosive environments. Please do not continue to use the device when it is damaged, broken or corrected, so as to avoid incorrect test results. Please refer to the emissivity information to confirm the actual temperature; otherwise the measured temperature will be inaccurate. Charging will cause the internal temperature of the machine to rise, thereby affecting the measurement accuracy. Therefore, it is recommended not to take measurements when charging the product.

UNI-T®

UNI-TREND TECHNOLOGY (CHINA) CO., LTD.

No.6, Gong Ye Bei 1st Road,
Songshan Lake National High-Tech Industrial
Development Zone, Dongguan City,
Guangdong Province, China



彩盒 菲林做货要求

序号	项目	内容	备注
1	尺寸	110*150mm	
2	材质	封面128双铜+内页60g双铜	
3	颜色	四色	
4	外观要求	完整清晰、版面整洁，无斑墨、残损、毛边、刀线错位等缺陷。	
5	装订方式	骑马钉	
6	表面处理		
7	其它	无	
版本		REV. 0	
DWH 设计	宣浩	MODEL 机型: Uti32	Part NO. 物料编号: 110401110944X
CHK 审核		 优利德科技(中国)股份有限公司	
APPRO. 批准			