

Schneider
Electric™
施耐德电气

⚠️⚠️ **DANGER / 危险**

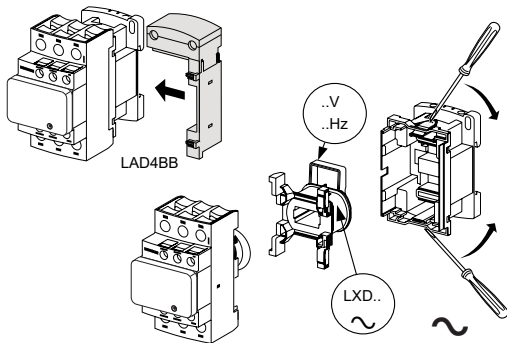
**HAZARD OF ELECTRIC SHOCK,
EXPLOSION, OR ARC FLASH**
Disconnect all power before servicing
equipment.
**Failure to follow these instructions will
result in death or serious injury.**

电击、爆炸或弧闪的危险
在此电力设备上工作时,请
先切断所有电源
不遵循上述说明将导致人员伤亡

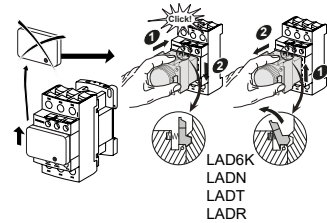
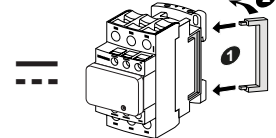
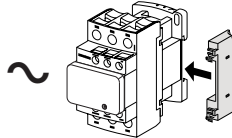
产品合格证

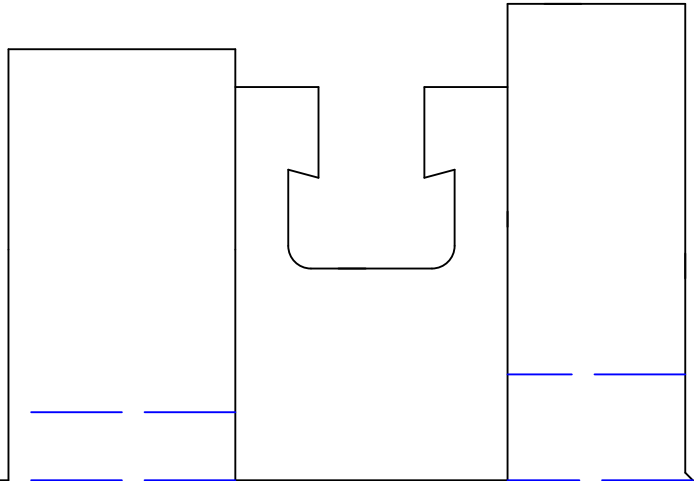
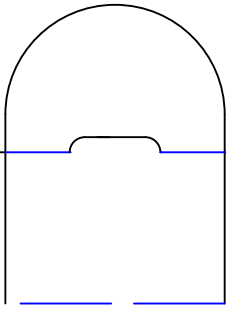
本产品经检验,符合标准 IEC60947/
GB/T14048/GB21518,准予出厂。

TeSys LC1D...C 交流接触器
TeSys CAD...C 控制继电器



当用于电动机启动时,请选用Schneider的LR系列热继电器。
(For Motor Starting Use Schneider Overload Relay Series LR)





当有NTD熔断丝或额定运行短路分断能力不小于5000A的短路器保护下, 可用于600V, 预期短路电流为5000A的电路。(Suitable for use on a circuit capable of delivering not more than 5000 rms sym. amps. 600V max. when protected by NTD class fuses, or when protected by a circuit breaker having an interrupting rating not less than 5000rms. amps. 600v max.)

以下型号产品属于符合能效要求, 产品的吸持功率和能源效率等级如下:
The following products meet the Energy Efficiency requirements. The power consumption and Energy Efficiency grades are:

产品型号 (Product Type)	LC1D09..C	LC1D12..C	LC1D18..C	LC1D25..C	LC1D32..C	LC1D38..C
最大吸持功率低于(VA) (Maximum power consumption lower than)	9.5	9.5	9.5	9.5	9.5	9.5
能效等级 (Energy efficiency grade)	3	3	3	2	2	2

Schneider Electric Industries SAS
35, rue Joseph Monier
CS 30323
F - 92506 Rueil Malmaison Cedex
www.se.com

CH00988-10
07/2021

Schneider Electric Limited
Stafford Park 5
Telford, TF3 3BL
United Kingdom
www.se.com/uk

