

**Schneider**  
Electric  
施耐德电气

**⚠ ⚠ DANGER / 危险**

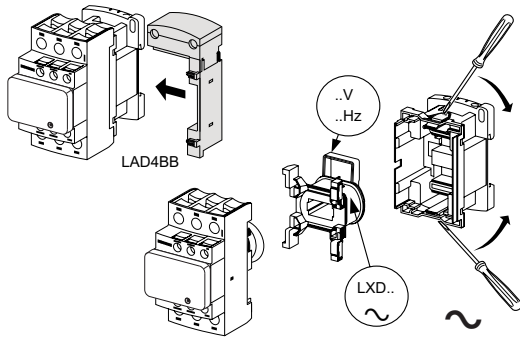
**HAZARD OF ELECTRIC SHOCK, EXPLOSION, OR ARC FLASH**  
Disconnect all power before servicing equipment.  
**Failure to follow these instructions will result in death or serious injury.**

电击、爆炸或弧闪的危险  
在此电力设备上工作时, 请先切断所有电源  
不遵循上述说明将导致人员伤亡

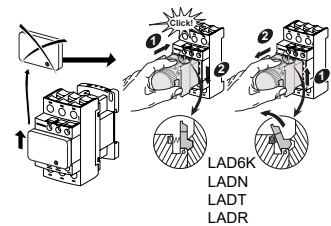
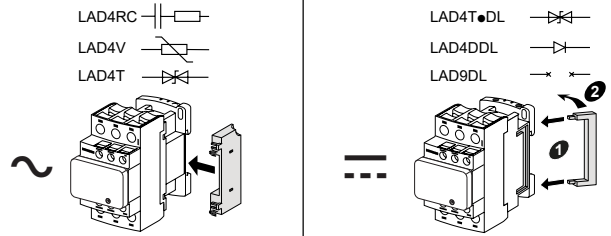
**产品合格证**

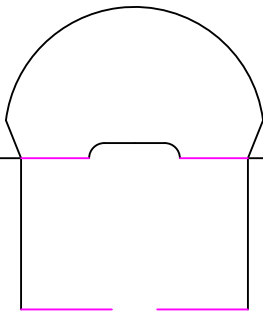
本产品经检验, 符合标准 IEC60947/  
GB/T14048/GB21518, 准予出厂。

TeSys LC1D...C 交流接触器  
TeSys CAD...C 控制继电器



当用于电动机启动时, 请选用Schneider的LR系列热继电器。  
(For Motor Starting Use Schneider Overload Relay Series LR)





当有NTD熔断丝或额定运行短路分断能力不小于5000A的短路器保护下，可用于600V，预期短路电流为5000A的电路。(Suitable for use on a circuit capable of delivering not more than 5000 rms sym. amps. 600V max. when protected by NTD class fuses, or when protected by a circuit breaker having a interrupting rating not less than 5000rms. amps. 600v max.)

以下型号产品属于符合能效要求，产品的吸持功率和能源效率等级如下：  
The following products meet the Energy Efficiency requirements. The power consumption and Energy Efficiency grades are:

产品型号 (Product Type)	LC1D09..C	LC1D12..C	LC1D18..C	LC1D25..C	LC1D32..C	LC1D38..C
最大吸持功率低于(VA) (Maximum power consumption lower than)	9,5	9,5	9,5	9,5	9,5	9,5
能效等级 (Energy efficiency grade)	3	3	3	2	2	2

**Schneider Electric Industries SAS**  
35, rue Joseph Monier  
CS 30323  
F - 92506 Rueil Malmaison Cedex  
www.se.com

CH00987-12  
07/2021

**Schneider Electric Limited**  
Stafford Park 5  
Telford, TF3 3BL  
United Kingdom  
www.se.com/uk

